

500 Miles

Proclaimers
arr. Gordon Cree

Driving rock (♩=120)

pizz. (sempre)

mp

The first staff of music is in bass clef with a key signature of two sharps (F# and C#) and a 4/4 time signature. It begins with a dynamic marking of *mp*. The notation consists of quarter notes with accents, followed by a repeat sign, and then another set of quarter notes with accents, also followed by a repeat sign.

A

5 (41)

The first line of section A contains four quarter notes with accents, followed by a repeat sign, and then four eighth notes with accents, followed by four quarter notes with accents.

5 (41)

9 (45)

The second line of section A continues with four quarter notes with accents, followed by a repeat sign, and then four eighth notes with accents, followed by four quarter notes with accents.

9 (45)

B

13 (49)

The first line of section B contains four quarter notes with accents, followed by a repeat sign, and then four eighth notes with accents, followed by four quarter notes with accents.

13 (49)

18 (54)

The second line of section B continues with four eighth notes with accents, followed by four quarter notes with accents, and then a final eighth-note triplet with accents.

18 (54)

C

22 (58)

Section C consists of a single line of music with eight quarter notes.

22 (58)

This Arrangement © Copyright 2011 Gordon Cree
All Rights Reserved



26 (62)

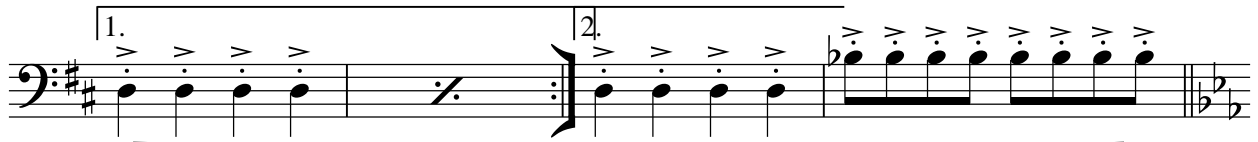
D



30 (66)



34 (70)



37

E



75



79

F



83



87



90

G

Double Bass

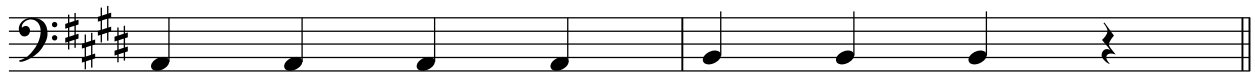
3



92 (108)



95 (111)



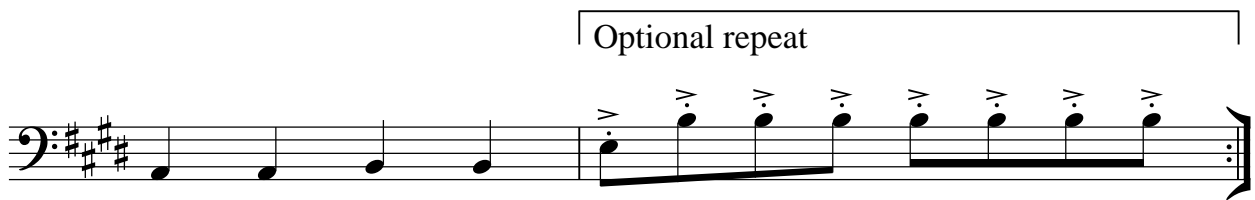
98 (114)

H

100 (116)



103 (119)



106 (122)

To go on...

rall.

(opt. arco)



123